

Prospectus

25/26



Department
for Education



Our story

At Nisai, we are committed to providing personalised education for students.

Our inclusive, fully online curriculum is thoughtfully designed to support learners from Upper Key Stage 2 (KS2) to Key Stage 5 (KS5). With a flexible approach that adapts to each student's unique needs, we empower learners to achieve their full potential and prepare them for future pathways. Whether it's mainstream education, further studies, apprenticeships, or employment.

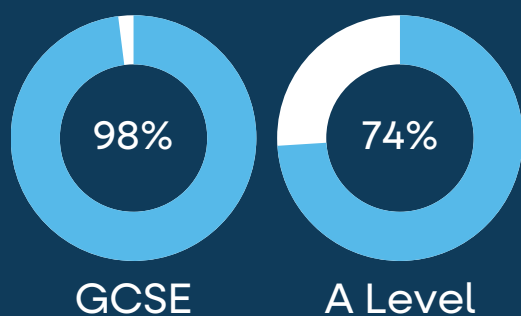
At Nisai, every learner's journey is our priority.

Nisai can be used by learners from, but not exclusive to, the following backgrounds:

- Cognition & learning difficulties
- Social, emotional & mental health challenges
- Sensory and/or physical challenges
- Communication & interaction difficulties
- Flexible study for lifestyle needs

Our student achievements

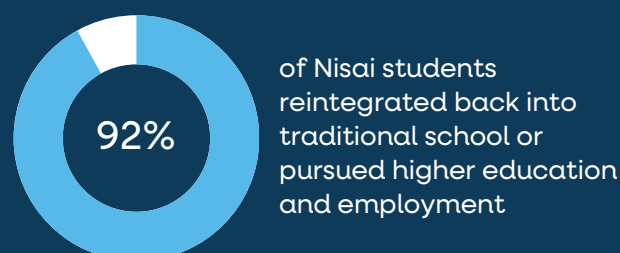
UK Pass Rates



GCSE

A Level

Re-engagement rate



of Nisai students reintegrated back into traditional school or pursued higher education and employment

*95% of Nisai's UK student population are enrolled with Special Education Needs or Disability

Nisai Virtual Academy

Imagine all the positive aspects of a school - the classrooms, subject specialists, a dedicated support team, extra-curricular activities and form tutors. Now picture it taking place online, in an inclusive and secure environment that welcomes every learner. That is the Nisai Virtual Academy.

Section 41 approved by the Department for Education, Nisai supports learners referred by local authorities, schools and parents by delivering timetabled, teacher-led lessons in a safe and secure environment.

Learning online doesn't mean learning alone. Our dedicated social space gives students the opportunity to connect, collaborate, and build friendships with peers from across the globe. Whether it's through group discussions, interest-based clubs, or virtual events, our social space fosters a sense of community and belonging—supporting both academic success and personal wellbeing.

Our well-being centre provides resources grounded in the Every Child Matters principles including:

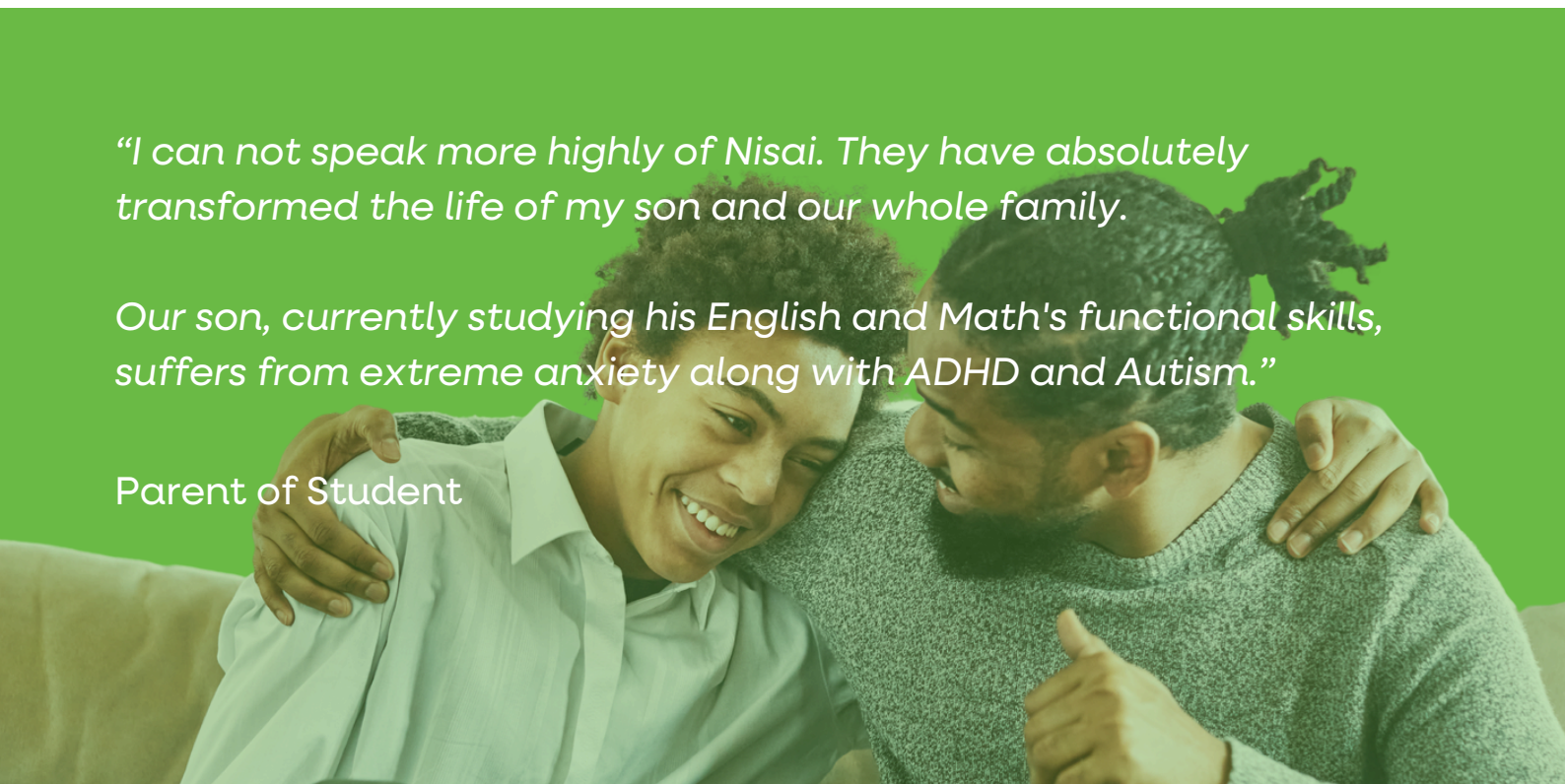
- My Health: Advice on quitting smoking, first aid, and healthy eating.
- My Safety: Information on online safety, hate crime awareness, and street smarts.
- My Community: Guidance on benefits, National Citizen Service, and British values.
- My Future: Options at 16, rights at work, volunteering, apprenticeships, and training programmes.

Through partnering with Unifrog, a leading provider of career and university guidance, we ensure our students receive the very best support when planning their futures. Through this partnership, students gain access to expert advice, interactive tools, and tailored resources to help them make informed decisions about higher education, apprenticeships, and career pathways.

"I can not speak more highly of Nisai. They have absolutely transformed the life of my son and our whole family.

Our son, currently studying his English and Math's functional skills, suffers from extreme anxiety along with ADHD and Autism."

Parent of Student



Short-term Provision

Our short-term Core Curriculum is a 10-week programme that is suitable for students who, for whatever reason, need to continue studying on a short-term basis away from a mainstream classroom.

- 1 hour live, teacher led lessons in English, Mathematics and Science available Monday to Friday
- Choose from 1 day up to 10 weeks
- Available from upper KS2 to KS4
- Quick turnaround/set up - if we receive a referral by 4pm the student can access their lessons the following day
- Attendance, contribution and engagement (ACE) will be monitored and reported on within every lesson
- Teachers update the notes to cover what has been achieved

N-HELPP

Nisai's Holistic English Learning Proficiency Programme (N-HELPP) brings together best practice of live teaching through the Nisai Virtual Academy in addition to the Units of Sound and WordQ software suites. Improvement in English supports progress across the full curriculum whilst providing greater opportunity in the workplace and beyond.

Learning English as a language provides the opportunity for students to learn everyday, usable English to aid communication. This supports in building confidence and self-esteem and develops the whole person rather than just knowledge.

- WordQ License: 1 Year
- Units of Sound License: 1 Year
- Live Literacy Support: 40 hrs over 8 weeks



Long-term Provision

Our long-term curriculum covers KS3 through to KS5 and enables students to study a variety of subjects as well as supporting them with reintegration or preparing them for their chosen pathway - whether this is college, university, apprenticeships or employment.

The majority of KS3 and KS4 courses consist of 4 x 30 minute lessons per week, per subject with KS5 being from 3 x 60 minute lessons per week. 2 x online live inductions will show the learner how to access live lessons, online clubs and societies, submitting assignments etc. Baseline assessments are carried out before timetabling of the student.

KS3 curriculum

The Key Stage 3 curriculum at Nisai provides the knowledge and skills that are required to help our learners advance to higher levels of study such as GCSE or Functional Skills.

English
Mathematics
Science
Personal, Social, Health and Economic Education (PSHE)
Information & Communication Technology (ICT)
History
Introduction to Humanities (NS3 only)

Length of Course	Weekly Live Lessons	Notes	Qualification Information
1 Year	4 x 30 minutes	NS1 - Year 7 NS2 - Year 8 NS3 - Year 9	No Qualifications



“His confidence has improved, and he is starting to address his anxiety so that he can continue to move forward.”

Parent of Student

GCSE/International GCSE

Course type / qualification	Subject	Specification	Duration	Weekly Live Lessons
GCSE / International GCSE	English Language	AQA 8700	2 Years	4 x 30 minutes
	English Literature	AQA 8702	2 Years	4 x 30 minutes
	Mathematics	Edexcel 1MA1	2 Years	4 x 30 minutes
	Biology	Edexcel 4BI1	2 Years	4 x 30 minutes
	Chemistry	Edexcel 4CH1	2 Years	4 x 30 minutes
	Physics	Edexcel 4PH1	2 Years	4 x 30 minutes
	Science	Edexcel 4SS0	2 Years	5 x 30 minutes
	Business	Edexcel 1BS0	2 Years	4 x 30 minutes
	History	Edexcel 1HI0	2 Years	4 x 30 minutes
	Citizenship	Edexcel 1CS0	2 Years	4 x 30 minutes
	Economics	Edexcel 4EC1	2 Years	4 x 30 minutes
	Psychology	Edexcel 1PS0	2 Years	4 x 30 minutes
	Sociology	AQA 8192	2 Years	4 x 30 minutes

Functional Skills & Other

Course type / qualification	Subject	Specification	Duration	Weekly Live Lessons
Functional Skills	English	NOCN	1 Year	4 x 30 minutes
	Mathematics	NOCN	1 Year	4 x 30 minutes
Other	CEFR International	NOCN	Up to 1 Year	4 x 30 minutes
	Digital Skills	NOCN	1 Year	4 x 30 minutes
	Employability	NOCN	16 weeks	4 x 30 minutes
	Entry Level Science	Edexcel NSC0	1 Year	4 x 30 minutes

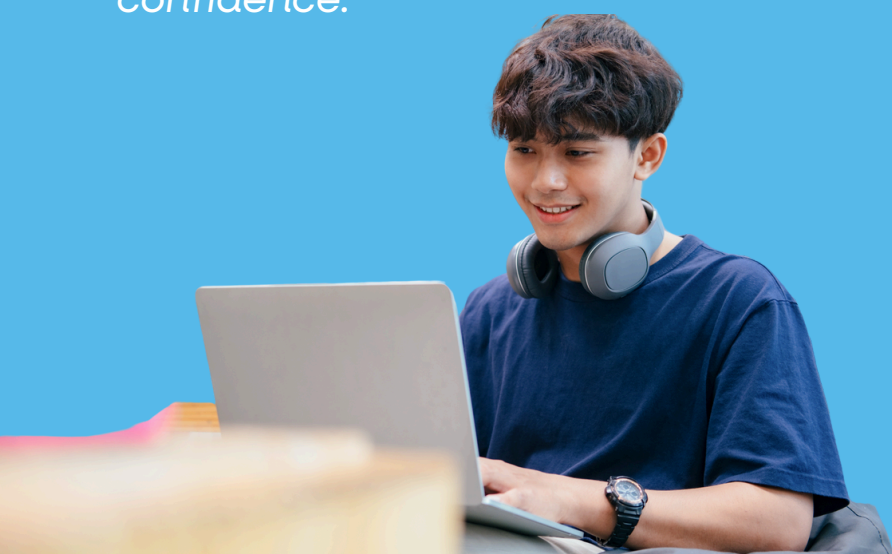
AS/A Levels

Course type / qualification	Subject	Specification	Duration	Weekly Live Lessons
AS Level	English Language	OCR H070	1 Year	4 x 1 hour
	English Literature	Edexcel 8ET0	1 Year	4 x 1 hour
	Mathematics	AQA 7356	1 Year	4 x 1 hour
	Psychology	Edexcel 8PS0	1 Year	3 x 1 hour
	Biology	AQA 7401	1 Year	3 x 1 hour
	Business	OCR H031	1 Year	3 x 1 hour
A Level	English Language	OCR H470	2 Years	4 x 1 hour
	English Literature	Edexcel 9ET0	2 Years	4 x 1 hour
	Mathematics	AQA 7357	2 Years	4 x 1 hour
	Psychology	Edexcel 9PS0	2 Years	3 x 1 hour
	Biology	AQA 7402	2 Years	3 x 1 hour
	Business	OCR H431	2 Years	3 x 1 hour

“Every teacher that has taught our son has worked hard to build his confidence and we have seen so much personal growth in him along with consistently improving marks.

We honestly could not be more proud of him and grateful to Nisai for the difference they have made to our son's learning and confidence.”

Parent of Student



Additional services

Personalised Learning Support Programme (PLSP)

specifically for young people who require the additional support of a Nisai mentor. Learners accessing this programme may need support in life skills, lessons, assignments, encouragement or to have additional support with any behavioural or emotional requirements facilitated by other professional organisations.

Units of Sound

personalised development of reading, spelling, memory and dictation areas of English. This can be beneficial to any learner that struggles with processing sounds within their own use of the language.

- Learners are encouraged to access the provision independently.
- Recommended 3 x 25 mins per week.
- 1 Year Licence

Virtual Mentoring

specifically designed for learners accessing our standard academic provision who require a mentor to support them with non-academic skills. The virtual support is designed to offer encouragement, support and confidence building.

- Flexible 10-Hour blocks

WordQ

software that helps users to read, write, and communicate with ease and independence. Including state-of-the-art word prediction, text-to-speech capability for better comprehension and effective proofreading, talk-to-type speech recognition (for PC only), and more.

- Age appropriate vocabulary, with Pro option available for older learners. Available as a desktop program for PC and Mac or as a webapp for Chromebooks. Available both online and off.
- 1 Year Licence



“Having a mentor has given me confidence in learning because it’s one-on- one and Jake (mentor) can help me with assignments if I need it.”

PLSP Student

 **4th Floor, 28 Clarendon Road,
Watford, WD17 1JJ**

 **0208 424 8475**

 **info@nisai.com**

 **www.nisai.com**